

DESCRIPTION

The SCV-85 Research Control® Valves are compact control valves designed to meet the manufacturing standards established by the 3A Symbol Council.

APPLICATIONS

Valves of the SCV-85 type are well suited to automated control systems found in biotechnology, pharmaceutical and food processes.

- Pressure
- Temperature
- Product injection
- Flow control in fermentation reactors
- Control of gas blankets in closed vessels
- Catalyst, defoamer and additive initiation

MATERIALS OF CONSTRUCTION

Size	½ inch, ¾ inch, 1 inch and 1 ½ inch
Body - Bonnet	316/316L Stainless Steel Barstock
Innervalue	316/316L Stainless Steel Barstock Trims Characteristics: Equal Percentage, Linear or Special
Clamps	304 or 316 Stainless Steel
Gaskets	Standard: Viton (FKM) Optional: Silicone, EPDM or Kalrez
"O" Rings	Standard: Viton (FKM) Optional: Silicone, EPDM or Kalrez
Actuator Housing	Standard: Epoxy Coated Aluminum Optional: 316/316L Stainless Steel

STANDARD FEATURES

- Manufactured to 3A Symbol standards
- Self-draining design
- Quick disassembly with clamps
- Choice of ends: butt-weld, Tri-Clamp®
- Designed for STEAM-IN-PLACE and CLEAN-IN-PLACE
- Internal finish: 16 Ra



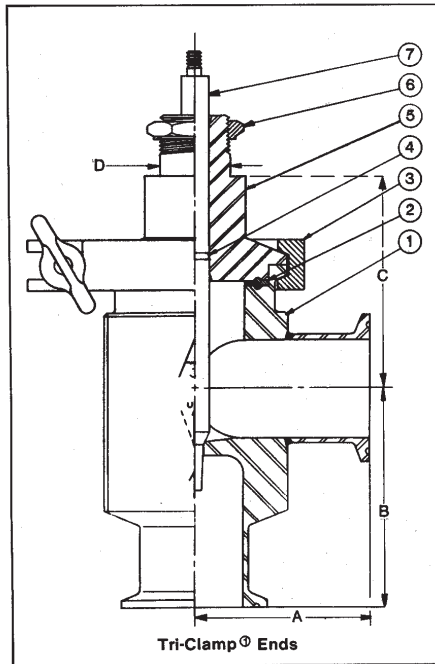
Image shown with optional stainless steel actuator

ACTUATOR CHOICES

Standard	Air-to-open, fail close Air-to-close, fail open
Optional	316 Stainless Steel Actuator
Optional	ATO or ATC with integral top mounted positioner
Optional	ATO or ATC with side mounted positioner
Signal Ranges	3-15#, 3-27#, 6-30# (3-9#, 9-15# with positioner)
Electronic Actuator	We offer a wide choice of electric actuators up to 200 pounds of thrust.

OTHER AVAILABLE VALVES

Research Control Valves manufactures many different models of both standard and specialty control valves, conventional as well as sanitary designs. If your needs for small control valves can be served with a custom designed valve, please contact your area representative for assistance.



Description of Items

1. Body
2. Body-Bonnet gasket
3. Body-Bonnet clamp
4. "O" ring
5. Bonnet
6. Yoke locknut
7. Inner valve

Dimensions

	1/2"	3/4"	1"	1 1/2"
A:	1.56"	1.56"	2.75"	2.75"
B:	1.56"	1.69"	2.62"	2.87"
C:	2.75"	2.62"	3.12"	2.87"
D:	.875" All sizes			
Stroke Length:	.562" All sizes			

Press./Temp. Rating

300 PSI @ 75 Deg. F
150 PSI @ 300 Deg. F

INNERVALVE CHART

Valve Size	Trim Designation	CV	KV	Nom. Rangeability		Orifice Port Diameter	Port Area (in. 2)
		Coefficient		Linear	(=%)		
1-1/2"	20	20.00	17.24	40:1	60:1	1.00"	.7854
1-1/2"	15	15.00	12.93	40:1	60:1	1.00"	.7854
1", 1-1/2"	10	10.00	8.62	40:1	60:1	.75"	.4420
1", 1-1/2"	8	8.00	6.90	40:1	60:1	.75"	.4420
1", 1-1/2"	6	6.00	5.17	40:1	60:1	.75"	.4420
3/4", 1", 1-1/2"	5	5.00	4.31	40:1	60:1	.50"	.1964
3/4", 1", 1-1/2"	4	4.00	3.45	40:1	60:1	.50"	.1964
1/2", 3/4", 1", 1-1/2"	A	3.00	2.59	40:1	60:1	.50"	.1964
1/2", 3/4", 1", 1-1/2"	B	2.00	1.72	40:1	60:1	.375"	.1105
1/2", 3/4", 1", 1-1/2"	C	1.25	1.08	40:1	60:1	.375"	.1105
1/2", 3/4", 1", 1-1/2"	D	0.80	0.69	40:1	60:1	.375"	.1105
1/2", 3/4", 1", 1-1/2"	E	0.50	0.43	40:1	60:1	.375"	.1105
1/2", 3/4", 1", 1-1/2"	F	0.32	0.28	30:1	40:1	.156"	.0192
1/2", 3/4", 1", 1-1/2"	G	0.20	0.17	30:1	40:1	.156"	.0192
1/2", 3/4", 1", 1-1/2"	H	0.13	0.11	30:1	40:1	.156"	.0192
1/2", 3/4", 1", 1-1/2"	I	0.08	0.07	30:1	40:1	.156"	.0192
1/2", 3/4", 1", 1-1/2"	J	0.05	0.04	30:1	40:1	.156"	.0192

AVAILABLE OPTIONS

- | | |
|---|--|
| <input type="checkbox"/> Manual Handwheel | <input type="checkbox"/> Certifications |
| <input type="checkbox"/> Filters | <input type="checkbox"/> Electric Actuator |
| <input type="checkbox"/> Positioners | <input type="checkbox"/> Limit Switches |
| <input type="checkbox"/> I/P Transducers | <input type="checkbox"/> Regulators |

Custom bracketing available with each option.

RCV is a registered trademark of Badger Meter, Inc.

Other trademarks appearing in this document are the property of their respective entities.

© 2011, Badger Meter, Inc. All rights reserved.

Due to continuous research, product improvements and enhancements, Badger Meter reserves the right to change product or system specifications without notice, except to the extent an outstanding contractual obligation exists.

Badger Meter | P.O. Box 245036, Milwaukee, Wisconsin 53224-9536
800-876-3837 | infocentral@badgermeter.com | www.badgermeter.com