



LESLIE
CONTROLS, INC.

A subsidiary of **CIRCOR** International, Inc.

12501 Telecom Drive, Tampa Florida 33637

**Installation, Operating and
Maintenance Instructions
Supplement**

**10/2.5.1.D
Rev. 0**

AEROFLOW SUPPLEMENT

Special Up-seating Flow to Open Mini-P

TABLE OF CONTENTS

INSTALLATION 1

MAINTENANCE 1

ILLUSTRATION INDEX

FIGURE 1 - SPECIAL UPSEATING FTO MINI-P 2

INSTALLATION

CAUTION!

All warnings from valve IOM must be followed.

NOTE: Refer to Fig. 1 for installation.

1. Install seat gasket (504b) into valve body (306).
2. Install valve plug (502) into cage liner (600) and install roll pin (505) as shown.
3. Install valve plug (502) and cage liner (600) into valve body (306).
4. Install gasket (504a), seat (503) and bonnet gasket (305).
5. Complete the bonnet (302) installation as stated in the valve IOM.

MAINTENANCE

1. During routine maintenance check the seating surface of the valve plug seat (503) and the plug (502). Replace/Repair as needed.
2. To replace the valve plug (502), tap out the roll pin (505), and replace with new.
3. The valve IOM should be followed for all operating and maintenance procedures.

Applies only to carbon steel valves.

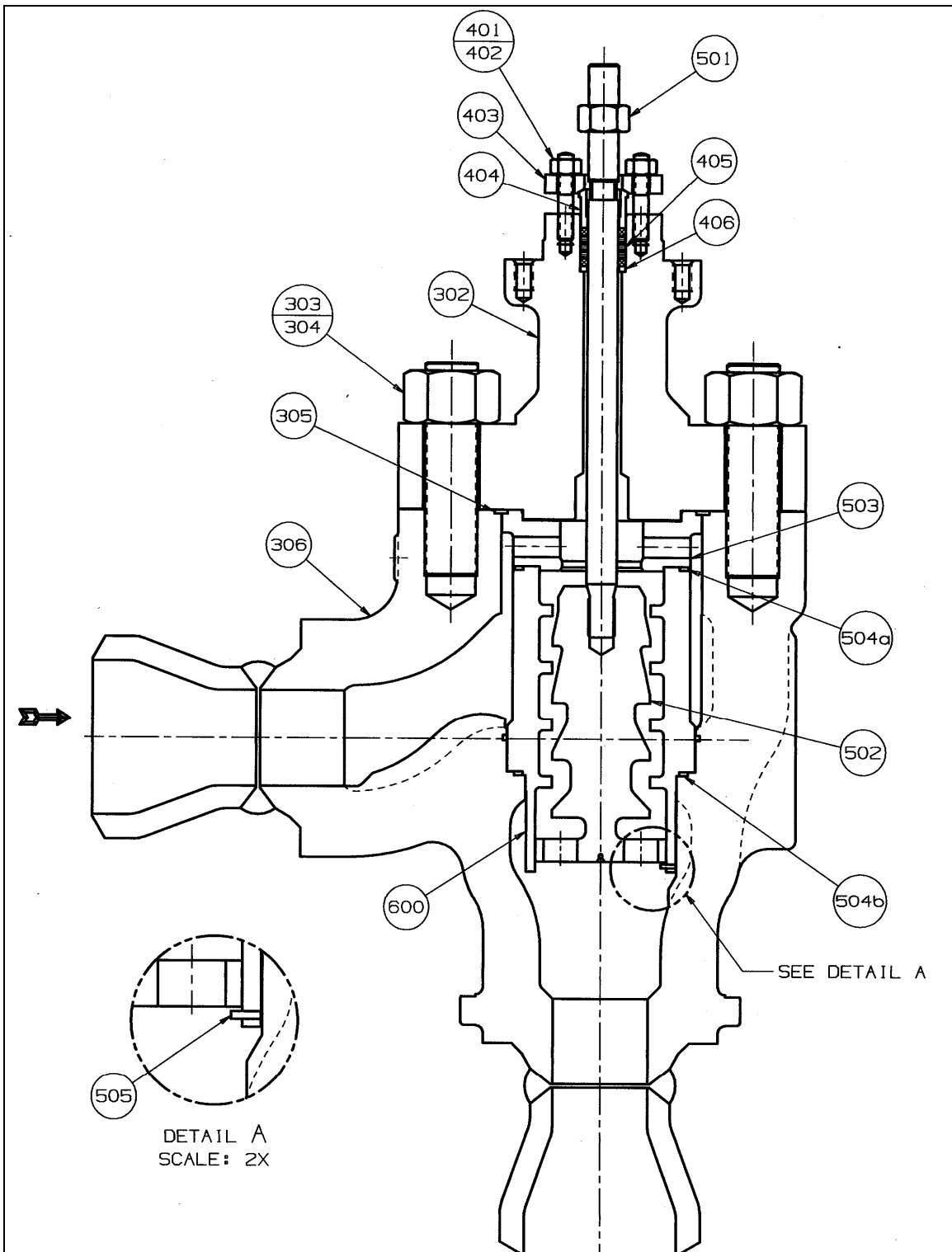


Figure 1 - Special Upseating FTO Mini-P